

# IDS LINKS Installation Steps (Macintosh)

---

The steps below will guide you through the installation and access the IDS Links program, which will allow access to your MLS program from your Macintosh computer.

1. Open your Internet Browser and navigate to <http://ids.marketlinx.com/nativemac.html> . You should be at a page that looks like this:



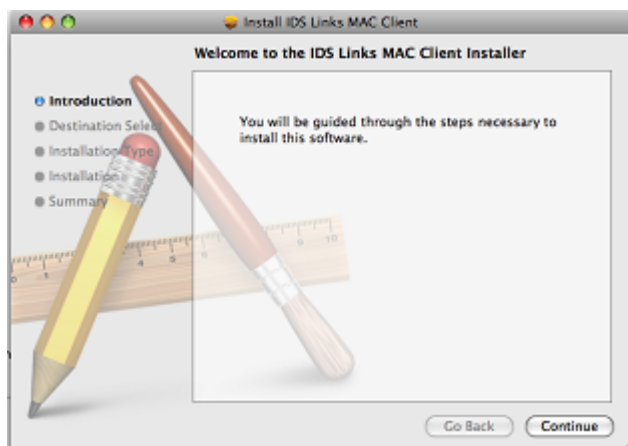
## **Installing the Mac OS X Client**

1. Click [here](#) to download **IDS LINKS.dmg**.
2. Double-click **IDS LINKS.pkg**.
3. Run the installation wizard using the default settings.

## **Then to run the native MAC client**

1. From the menu bar, click Go | Applications.
2. Double-click **ids**.

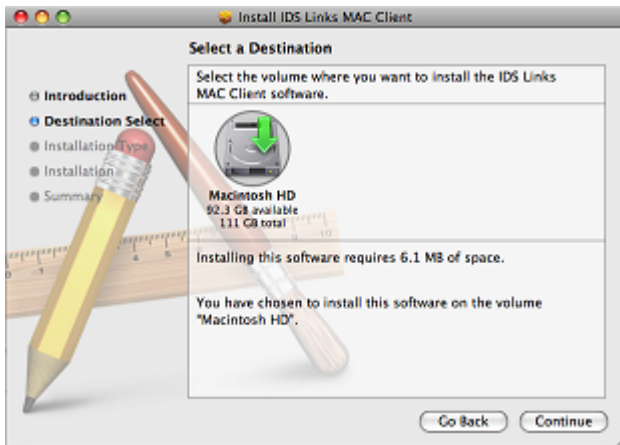
2. Click the "[here](#)" link in Step 1 on the site above, and then click Continue:



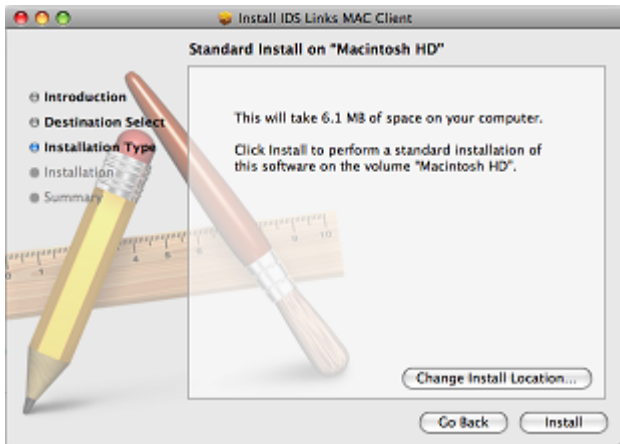
# IDS LINKS Installation Steps (Macintosh)

---

3. Select your HD to install the program and click Continue:



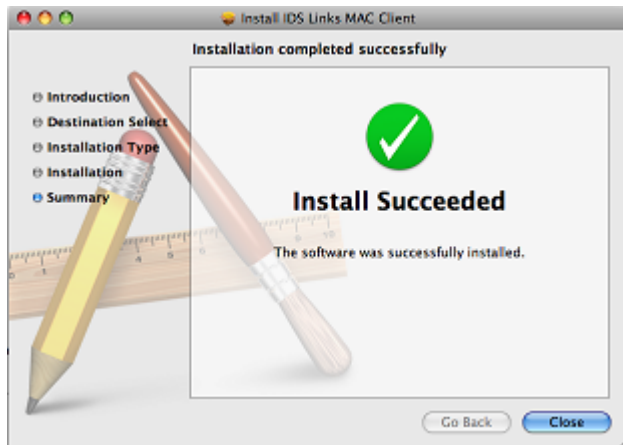
4. Click the Install button:



# IDS LINKS Installation Steps (Macintosh)

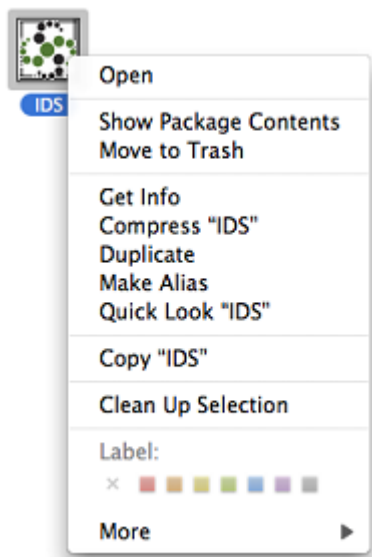
---

5. After the install is completed, you will see the following:



6. Click Close to complete the installation. Restart your Macintosh.

7. Open the Applications folder on your Mac (click on your Macintosh HD). Control-Click on the IDS icon. Click on **Make Alias**.



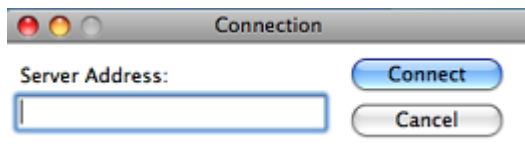
# IDS LINKS Installation Steps (Macintosh)

---

8. A new icon will appear in your Application folder called **IDS Alias**. Click and drag the **IDS Alias** icon to your Desktop. This will create a shortcut to the IDS Links program.



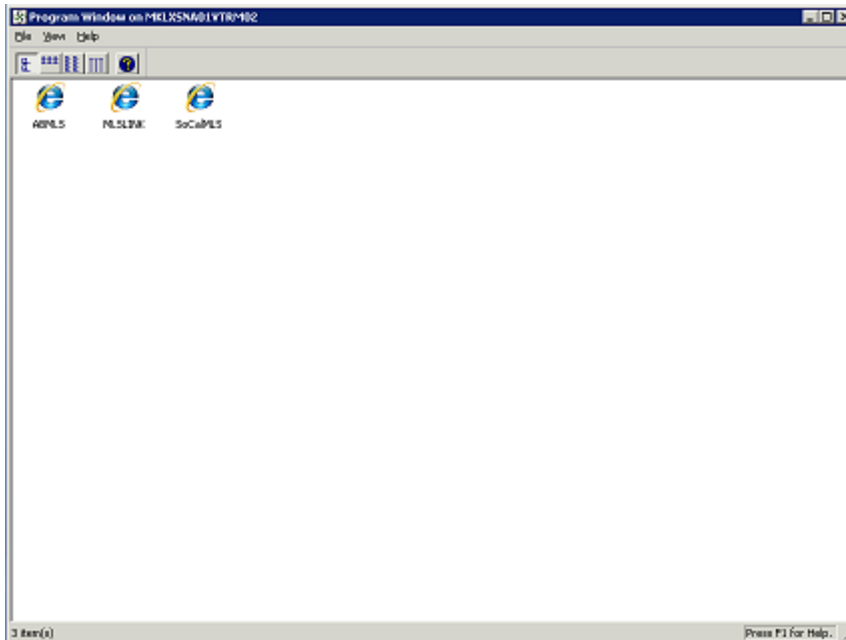
9. To use the program, double-click on the IDS icon as shown in Step 8. You will enter **ids.marketlinx.com:1494** in the Server Address box, and then click the Connect button:



10. You will be asked to enter a login and password. Enter **Actris** for the username and **bRu3rase** (*password is case sensitive*) for the password (*the credentials will be stored after the first login attempt*). Click Login. The main application window will open:

# IDS LINKS Installation Steps (Macintosh)

---



- 11.** Once the main application window opens, click on the icon that represents your MLS program. This will bring up your MLS site. Login to your program as you normally would.